

Getting Started

LicenseStream™ Plug-in for Adobe® Photoshop Lightroom

Welcome

Thank you for downloading the LicenseStream™ Plug-in for Adobe® Photoshop Lightroom. This plug-in allows you to upload content directly to LicenseStream right from the familiar Lightroom interface. Once uploaded, content is immediately recognized as yours and can be activated for immediate licensing.

System Requirements & Installation

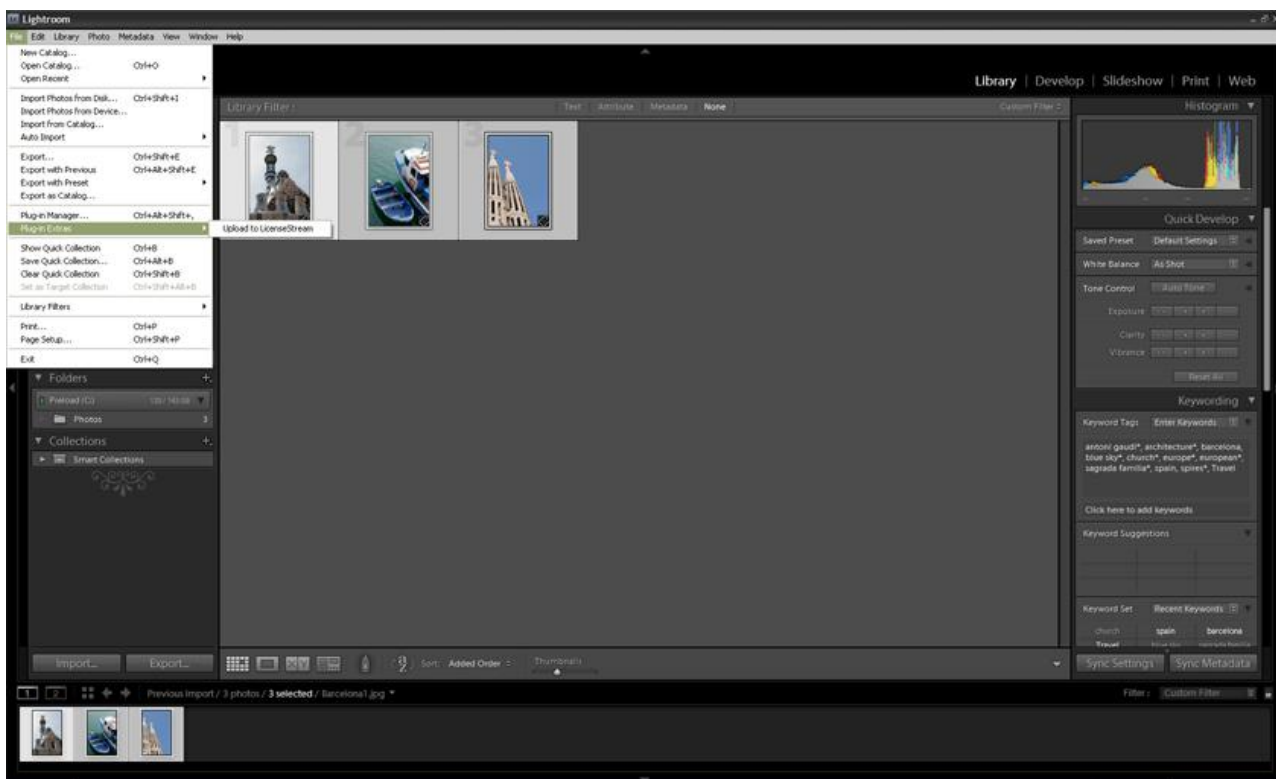
The LicenseStream Plug-in requires that you have Adobe Photoshop Lightroom installed on your computer. There are no additional system requirements for the plug-in beyond what is required to successfully run Adobe Photoshop Lightroom.

If you have not yet installed the plug-in, please do so by first extracting the Plug-in zip file you downloaded. In Windows, simply right-click on the zip file and select “Extract All.” On the Mac, simply doubleclick the zip file to access the Installation file.

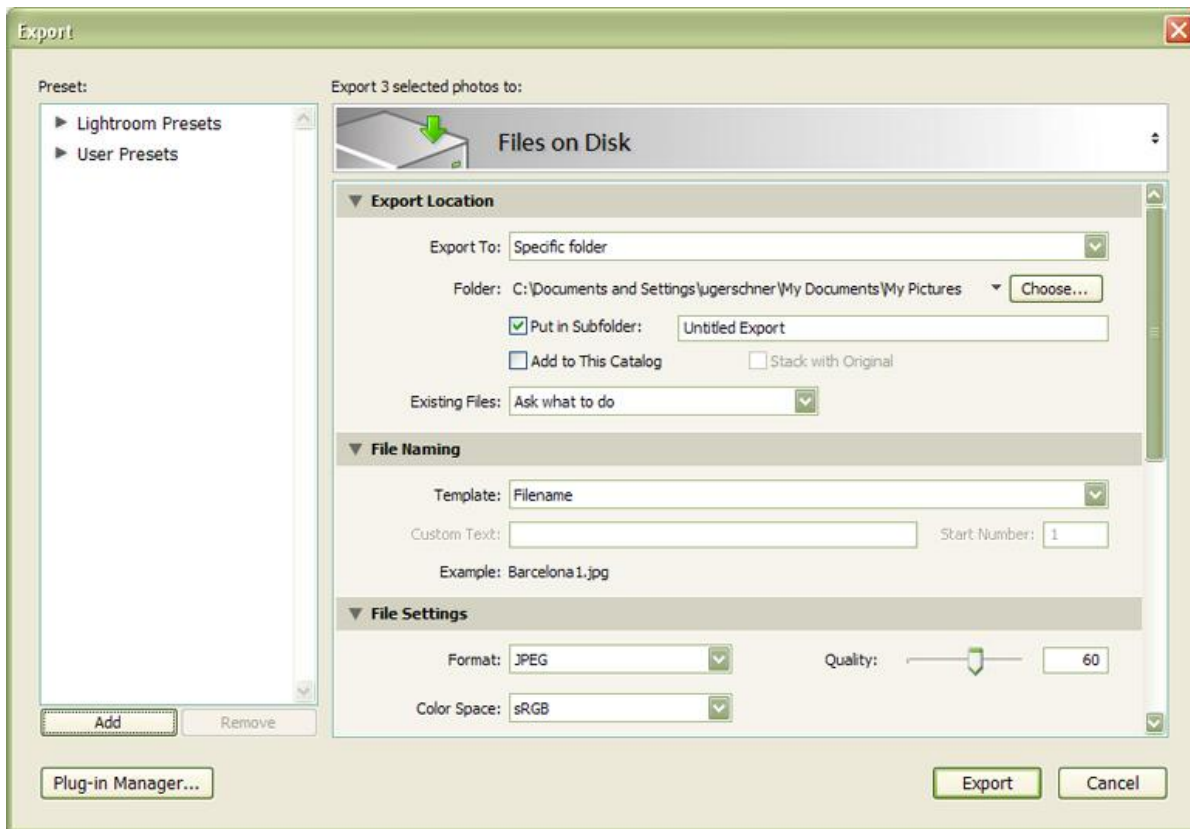
Once extracted, find and double-click the Installation EXE file (in Windows) or the Installation PKG file (in Mac OS X.) Then, simply follow the on-screen installation guide to install the plug-in.

Uploading Content

To upload content to LicenseStream, first select the content you wish to upload from the Library panel or filmstrip. Then, select “Plug-In Extras > Upload to LicenseStream” from the “File” menu to start the upload. You can monitor the upload progress from the top-left corner of the application, next to the Adobe Photoshop Lightroom logo.



Alternatively, you can upload files using the Export dialog box, available by selecting “Export...” from the “File” menu. Click the box titled “Export Files to Disk” and select “LicenseStream Upload” from the pop-up menu. This option allows you to set file and image settings for the upload.



If you have not yet created a LicenseStream account, you will be asked to do so during the upload process. You may choose between the fully functioning 30 day trial or an annual subscription. Once you’ve created your account or logged into your existing account, your browser window will open to a LicenceStream web page (the Activation Screen) displaying your content.

Activating Content

On the Activation screen you can assign license-specific metadata to activate your content. This step is required before your content can be licensed. Detailed instructions for Activation are displayed on the Activation screen. Whether or not you create licenses for your content, **any content you activate is automatically registered with you as the owner in the LicenseStream Content Registry.**

ImageSpan is a trusted solution provider and is the exclusive provider of license registry services to the PLUS Coalition, the multi-nation and multi-industry standard for image licensing.

FAQ - LicenseStream Plug-in for Adobe Photoshop Lightroom CS3

Why do I have to create an account to use the Plug-in?

The features within LicenseStream that protect your work, allow you to license your content and provide revenue opportunities necessitate that you are identified through an account.

Why does nothing happen when I upload or export files to Lightroom?

LicenseStream does not launch in your browser window until after the upload is completed. This can be virtually instantaneous or can take several minutes or more, depending on your Internet connection speed and the size of the image(s) you are uploading.

Why do I have to provide my personal information to create a trial LicenseStream account?

Your personal information is required: 1) so there is enough data to effectively register the content as yours and 2) this information is required for licensing and for payment you should a buyer purchase rights to your licensed work through LicenseStream.

Will I get paid on works licensed during my trial after my trial expires?

Yes. Any monies paid to LicenseStream on invoices created during your trial will be paid to you (minus any applicable service fees), regardless of your account status.

How long after my trial account expires do you continue to store my content?

90 days. At any time within 90 days of your trial account expiring, you may purchase an annual subscription and regain access to your LicenseStream account. After 90 days your content and account will be removed from LicenseStream.

What if I have more questions?

Visit <http://www.licensestream.com/licensestreamportal/FAQ.html>. You'll find more FAQs as well as instructions for contacting LicenseStream Support.